

Document # 357509

Flaggland Park

Fourth Addition

Book 21 Plots 41

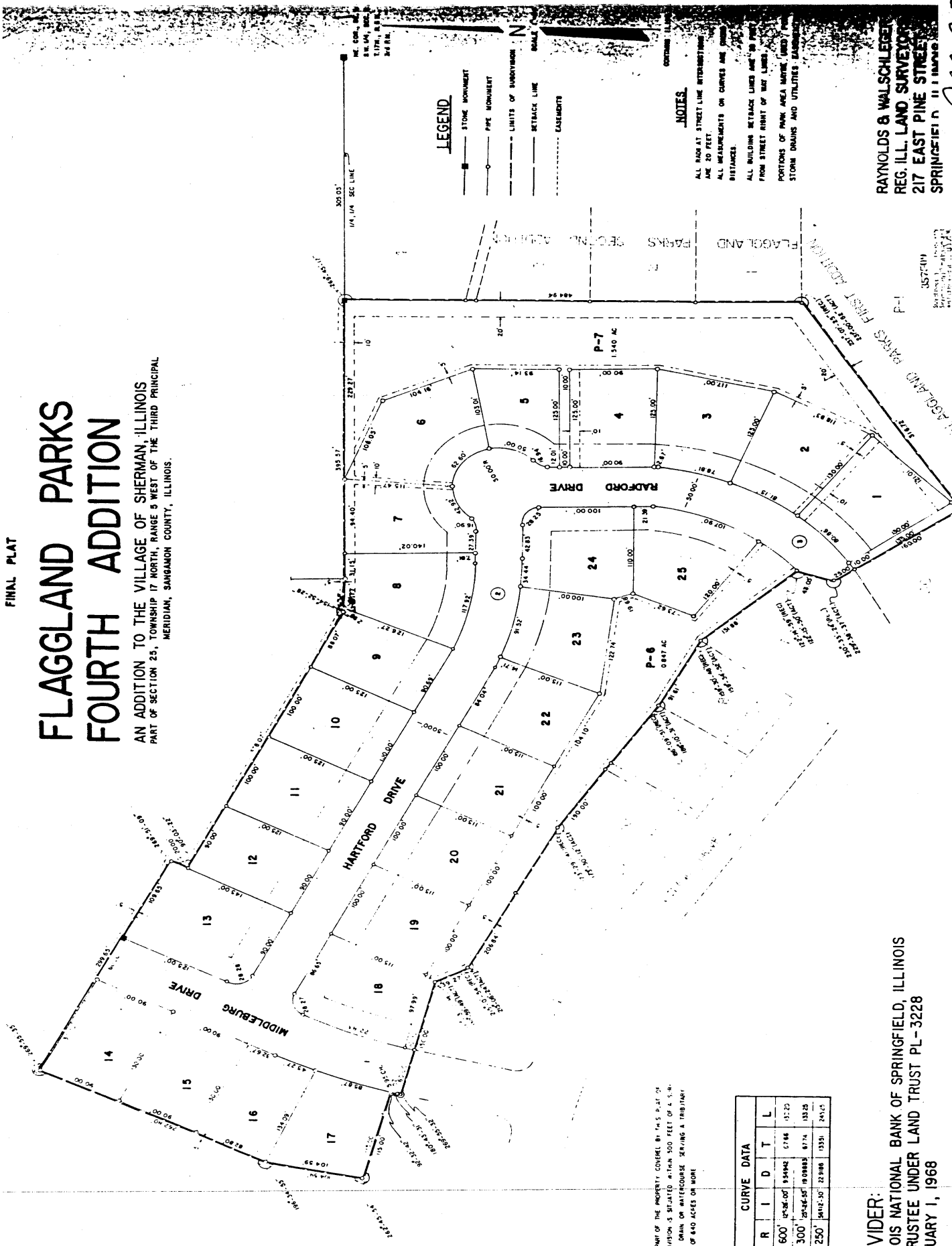
July 24-1973

In Bo desk

FINAL PLAT

FLAGGLAND PARKS FOURTH ADDITION

AN ADDITION TO THE VILLAGE OF SHERMAN, ILLINOIS
PART OF SECTION 25, TOWNSHIP 17 NORTH, RANGE 5 WEST OF THE THIRD PRINCIPAL
MERIDIAN, SANGAMON COUNTY, ILLINOIS.



NO PART OF THE PROPERTY COVERED BY THIS PLAT OF SUBDIVISION IS SITUATED WITHIN 500 FEET OF A SURFACE DRAIN OR WATERCOURSE SERVING A TRIBUTARY AREA OF 640 ACRES OR MORE.

CURVE DATA				
#	R	I	D	L
1	600'	120°00'00"	9.94942	57.66
2	300'	125°45'00"	19.08883	87.74
3	250'	140°12'30"	22.988	133.51

SUBDIVIDER:
ILLINOIS NATIONAL BANK OF SPRINGFIELD, ILLINOIS
AS TRUSTEE UNDER LAND TRUST PL-3228
FEBRUARY 1, 1968

LEGEND
 ———— STONE MONUMENT
 ———— PIPE MONUMENT
 - - - - - LIMITS OF SUBDIVISION
 - - - - - SETBACK LINE
 - - - - - EASEMENTS

NOTES
 ALL RADIAL STREET LINE INTERSECTIONS ARE 20 FEET.
 ALL MEASUREMENTS ON CURVES ARE CENTER DISTANCES.
 ALL BUILDING SETBACK LINES ARE 20 FEET FROM STREET RIGHT OF WAY LINES.
 PORTIONS OF PARK AREA MAINT. (MSD) AND STORM DRAIN AND UTILITIES EASEMENTS.

RAYNOLDS & WALSCHEGER
REG. ILL. LAND SURVEYORS
217 EAST PINE STREET
SPRINGFIELD, ILLINOIS

CAB-C-341
Book 21 pg. 41

BK 21-P-41

CAB C-341

BT 21 341

3577411
 2500-42-28 (RECT.)
 268-42-28 (RECT.)
 2500-42-28 (RECT.)
 268-42-28 (RECT.)